



Real-Time Insights & CEP

SQL SERVER STREAMINSIGHT & THE REAL-TIME WEB

BY AHMAD ALKILANI

CEP?

Analyze and act on data while it is in motion

Event-driven Architecture

Why Complex:

In-memory analysis of
continuous stream(s) of data

Near-zero latency

High throughput

The Toll booth problem



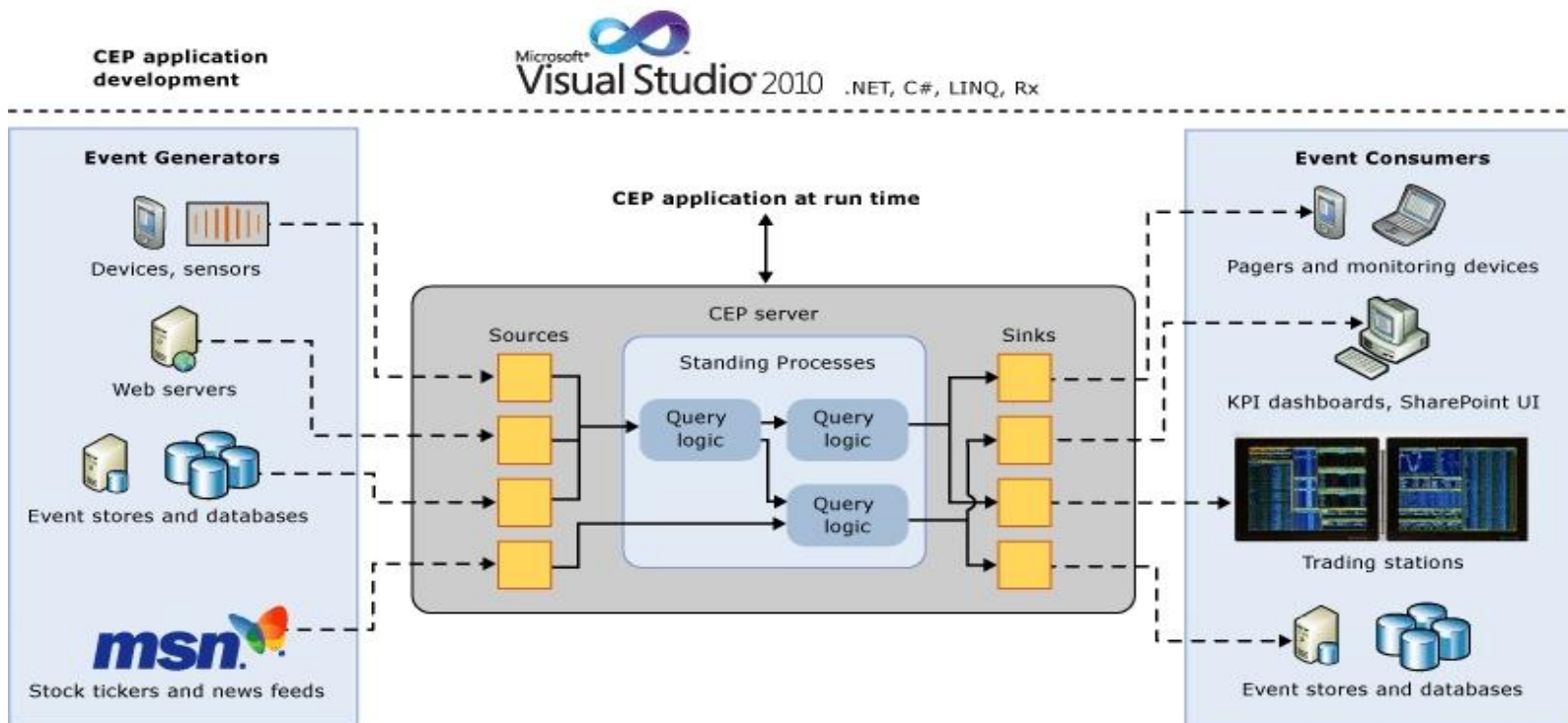
STREAMING DAY

The 405



SQL SERVER STREAMINSIGHT

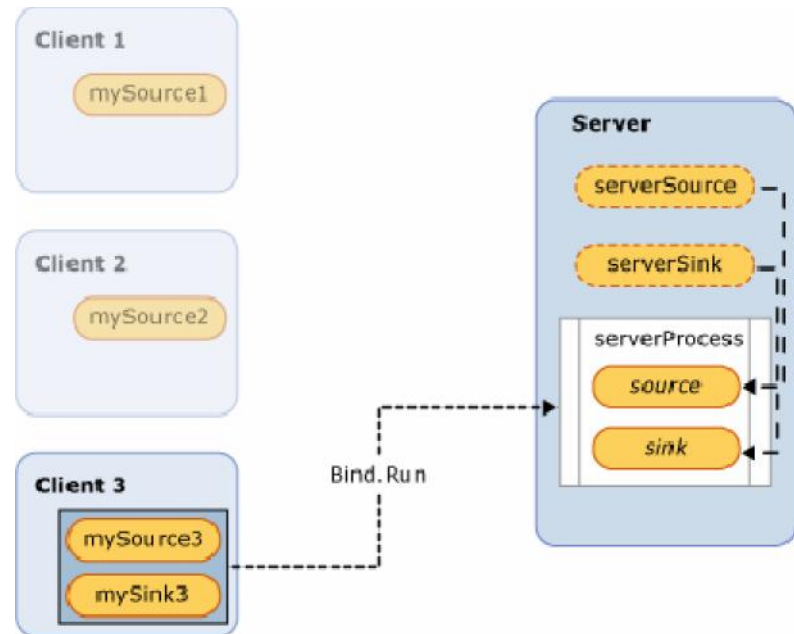
StreamInsight platform



SOURCES & SINKS



BINDING

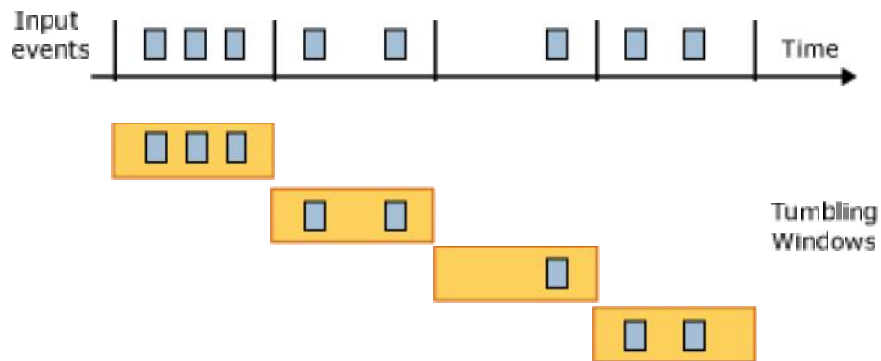


Demo :

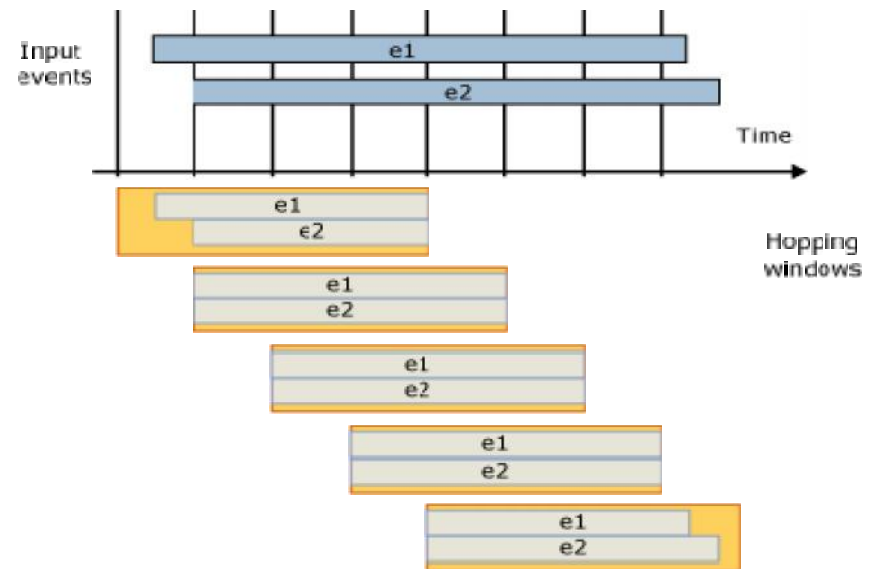
Basic Queries in StreamInsight

WINDOWS

Tumbling Windows



Hopping Windows



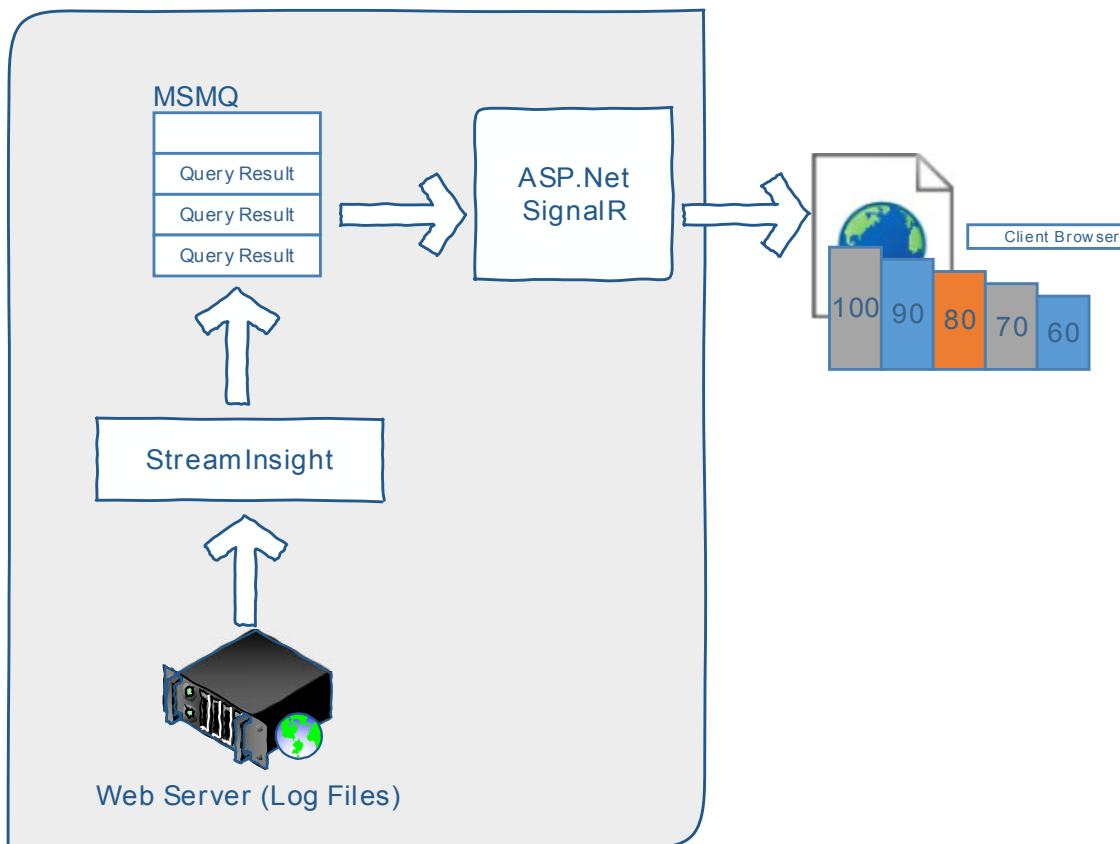
Other Types:

- Count
- Snapshot

Demo :

Queries Over Windows

Real-Time Web with SignalR & D3js



SignalR

Real time persistent connection abstraction over the top of HTTP for .Net

D3.js

JavaScript library for manipulating documents based on data. (d3js.org)

Demo :

Real – Time Analytics

RESOURCES

- Getting Started with StreamInsight

<http://blogs.msdn.com/b/streaminsight/archive/2012/09/18/getting-started-with-streaminsight-2-1.aspx>

- Richard Seroter's blog and Pluralsight course

<http://seroter.wordpress.com/>

<http://www.pluralsight.com/training>

- My personal website (Slides will be here)

<http://www.EASkills.com>



QUESTIONS